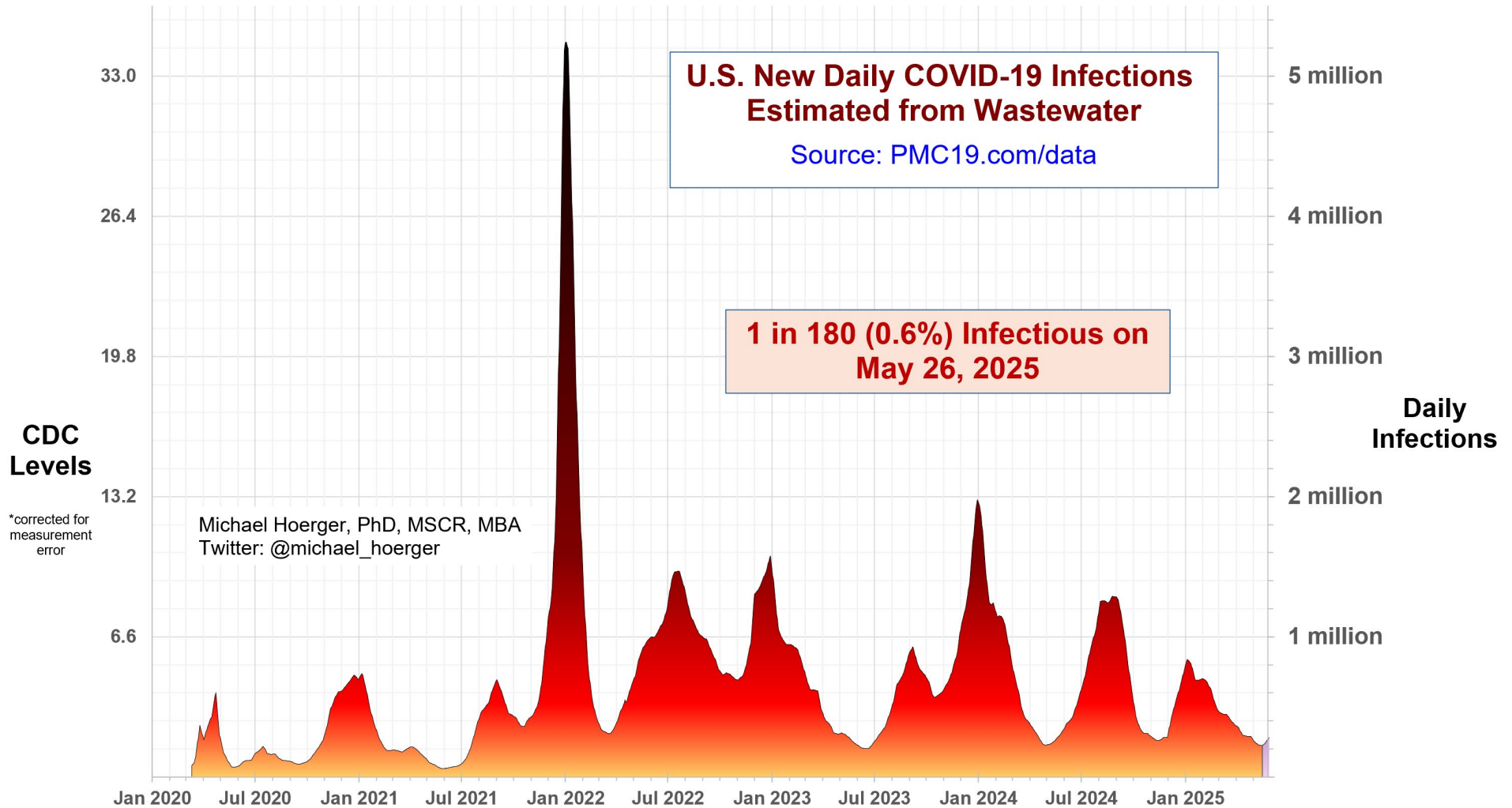


PMC U.S. COVID-19 Case Estimation and Forecasting Model: Report for May 26, 2025 pmc19.com/data

Michael Hoerger, PhD, MSCR, MBA, Pandemic Mitigation Collaborative (PMC)



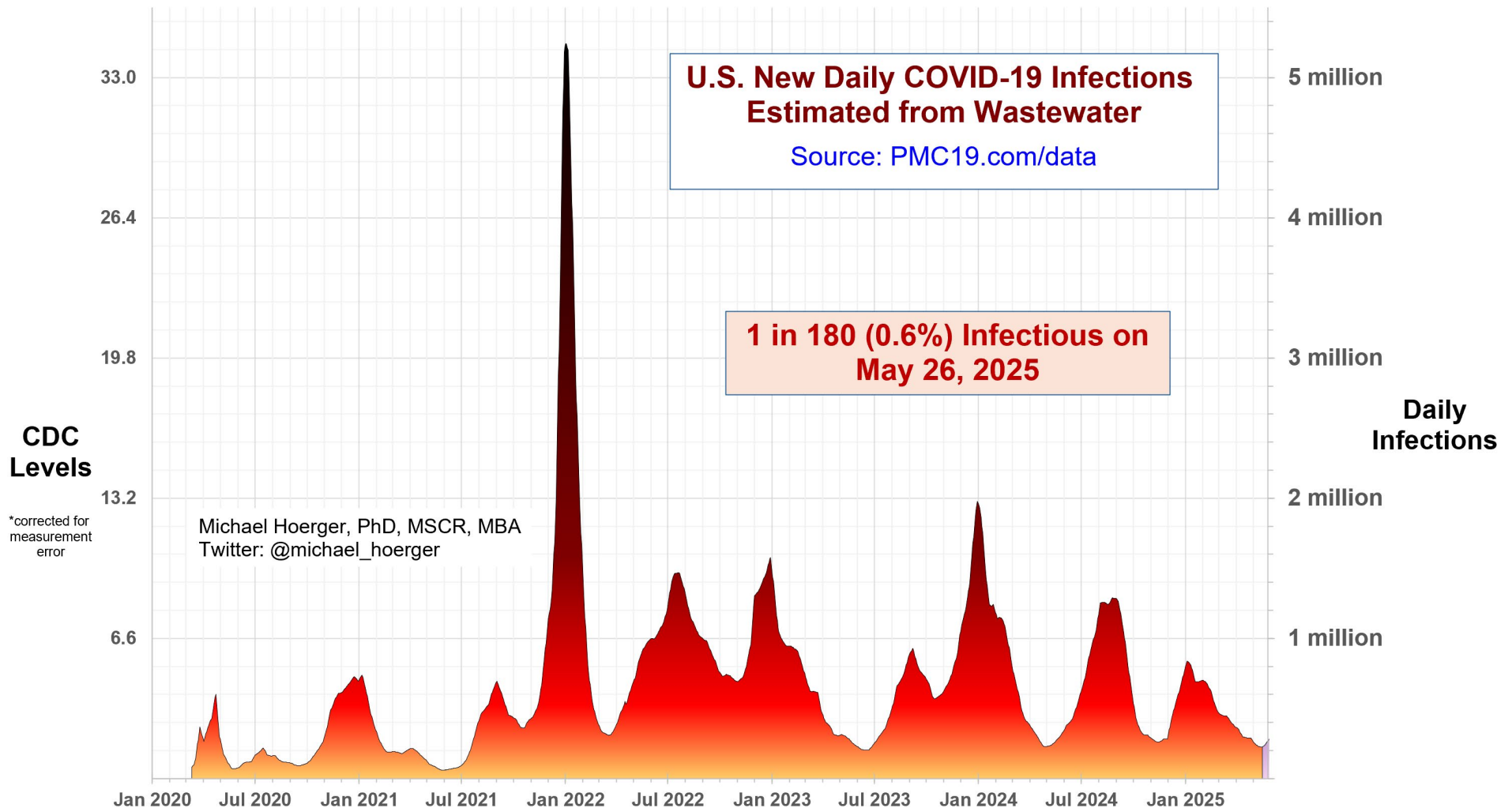
Cite as: Hoerger, M. (2025, May 26). *PMC U.S. COVID-19 Case Estimation and Forecasting Model: Report for May 26, 2025*. Pandemic Mitigation Collaborative. <http://www.pmc19.com/data>

Announcements

Data Quality Note: The CDC (80% model weight) and Biobot (20% model weight) both reported this week. Data quality is moderate. The CDC data are running a bit “hotter” than Biobot at the moment; specifically, CDC sites are showing about 60% higher estimated transmission than the Biobot sites.

The Big-Picture View of the Pandemic

We are in a “lull” between Covid waves. Presently, an estimated 0.6% (1 in 180 people) are actively infectious. The national average for transmission may not get much lower for some time. Unless we head toward an atypically low lull, transmission will percolate and tick up before long.



Statistical Summary

Presently, we are seeing an estimated nearly 1.9 million weekly infections, likely to result in 93-372k Long COVID cases, and 100-1,100 excess deaths in the U.S. In a room of 50 people of average risk, there would be a 1 in 4 chance of exposure. Transmission rarely gets this low (<27% of all days of the pandemic), mostly in the first 1.5 years the onset of COVID-19 when universal precautions were the norm.

Current Levels for May 26, 2025

% of the Population Infectious

0.6% (1 in 180)

New Daily Infections

266,000

New Weekly Infections

1,862,000

Resulting Weekly Long COVID Cases

93,000 to 372,000

Resulting Weekly Excess Deaths

700 to 1,100

Monthly Forecast

Average % of the Population Infectious

0.8% (1 in 126)

Average New Daily Infections

380,467

New Infections During the Next Month

11,414,000

Resulting Monthly Long COVID Cases

571,000 to 2,283,000

Resulting Monthly Excess Deaths

4,100 to 6,800

Running Totals

Infections Nationwide in 2025

68,826,000

Average Number of Infections Per Person All-Time, U.S.

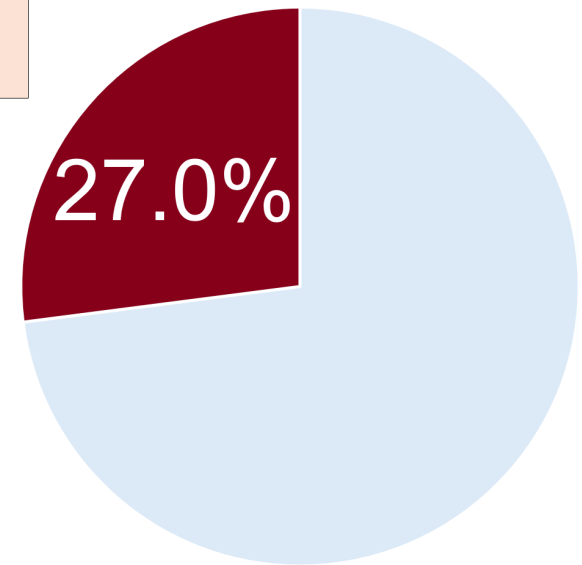
3.76

How Does Risk Increase with More Social Contacts?

Number of People	Chances Anyone Is Infectious	Number of People	Chances Anyone Is Infectious
1	0.6%	15	8.0%
2	1.1%	20	10.6%
3	1.7%	25	13.0%
4	2.2%	30	15.4%
5	2.8%	35	17.7%
6	3.3%	40	20.0%
7	3.8%	50	24.3%
8	4.4%	75	34.2%
9	4.9%	100	42.8%
10	5.4%	300	81.3%

Assumes no testing/isolation protocols (U.S. only)
pmc19.com/data

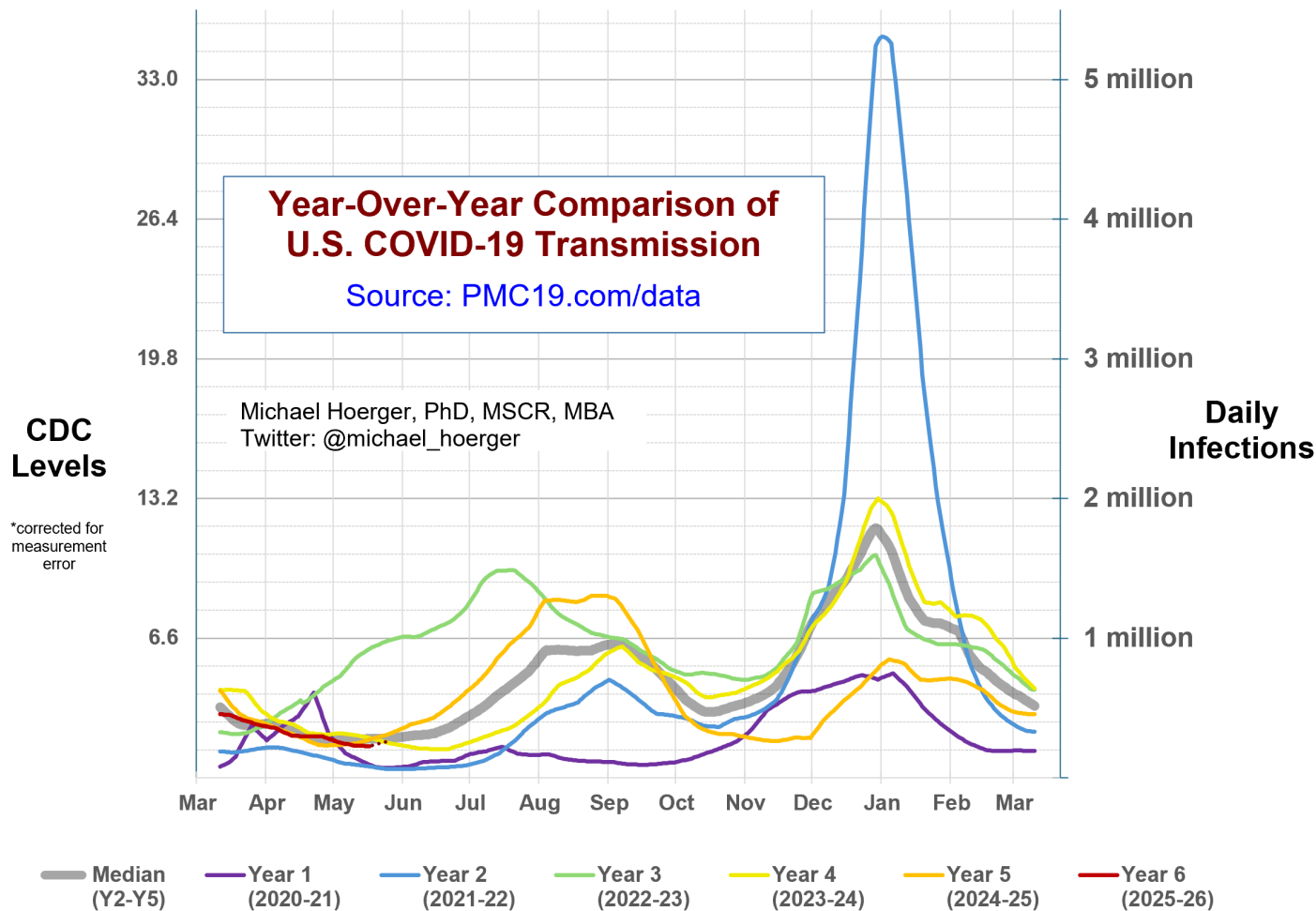
Michael Hoerger, PhD, MSCR, MBA
Twitter: @michael_hoerger



There is more COVID-19 transmission today than during 27% of the pandemic.

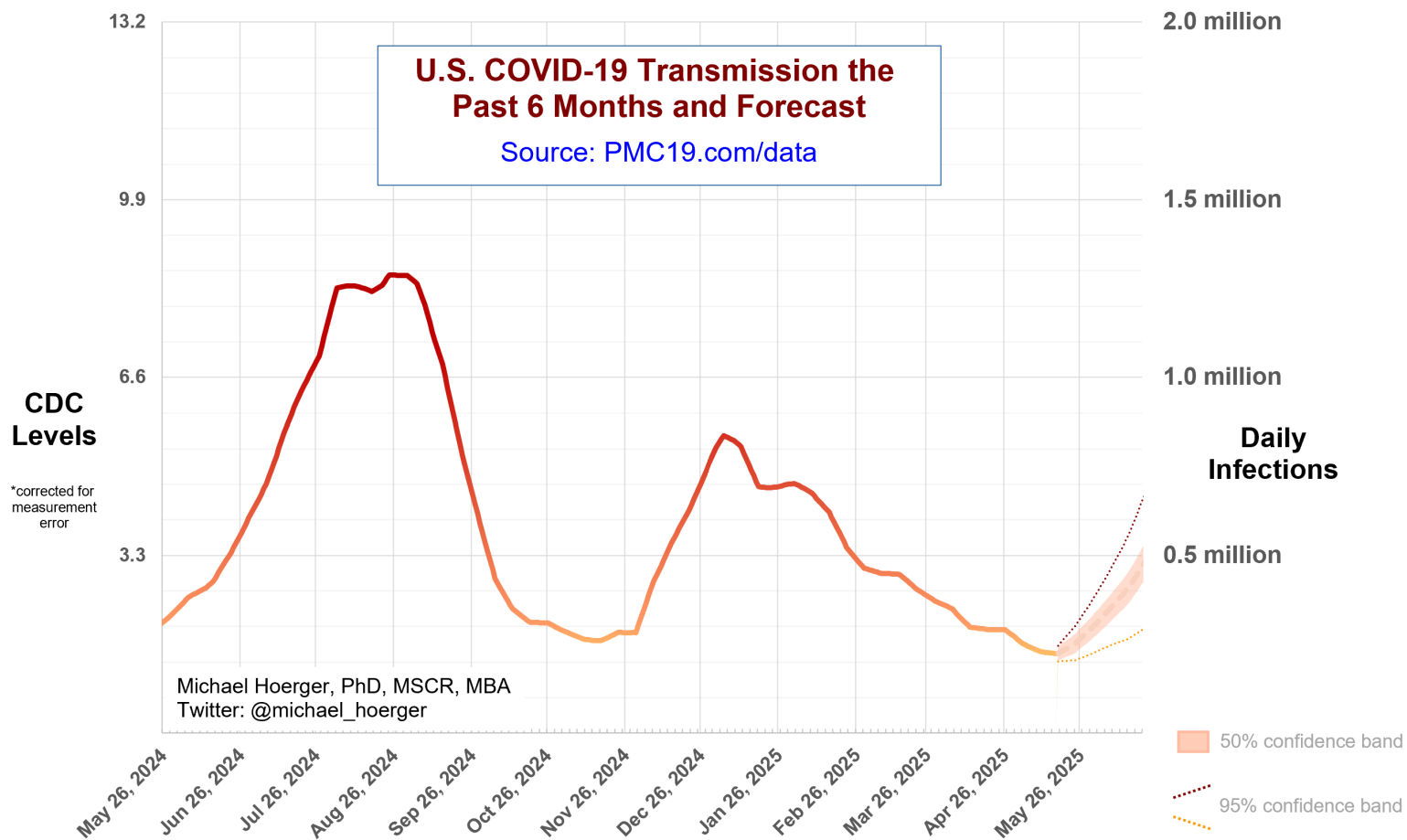
Year-Over-Year Comparisons

The year-over-year graph shows current transmission along the red line in the lower left corner. The model is tracking closely with the median, and as more data come in, we will see whether we are headed more toward a pattern like Year 4 (yellow line, later peak) or Year 5 (orange line, earlier peak). Last week we noted that with the reporting lags from CDC and Biobot, we would begin to see an uptick in their data this week or next week. Both have flat national transmission and an uptick in the West region.



Close-up on the Current Forecast

This graph shows the current forecast. Note that values for “today” are a forecast from data 9-12 days old. The current forecast is for steady transmission of 250-450k daily infections the next several weeks. Last week, we updated our model, which has had the benefit of reducing the size of the 4-week 95% confidence interval by about 40% for more precision under typical circumstances. In an optimistic scenario of percolating near the lull, transmission would remain similar the next few weeks. In a pessimistic scenario, if NB.1.8.1 takes off very quickly, we could reach 650k daily infections in a month. The median forecast is for closer to 450k daily infections in a month with a peak near late August. Keep an eye on the West region and NB.1.8.1 to assess which path we are on.



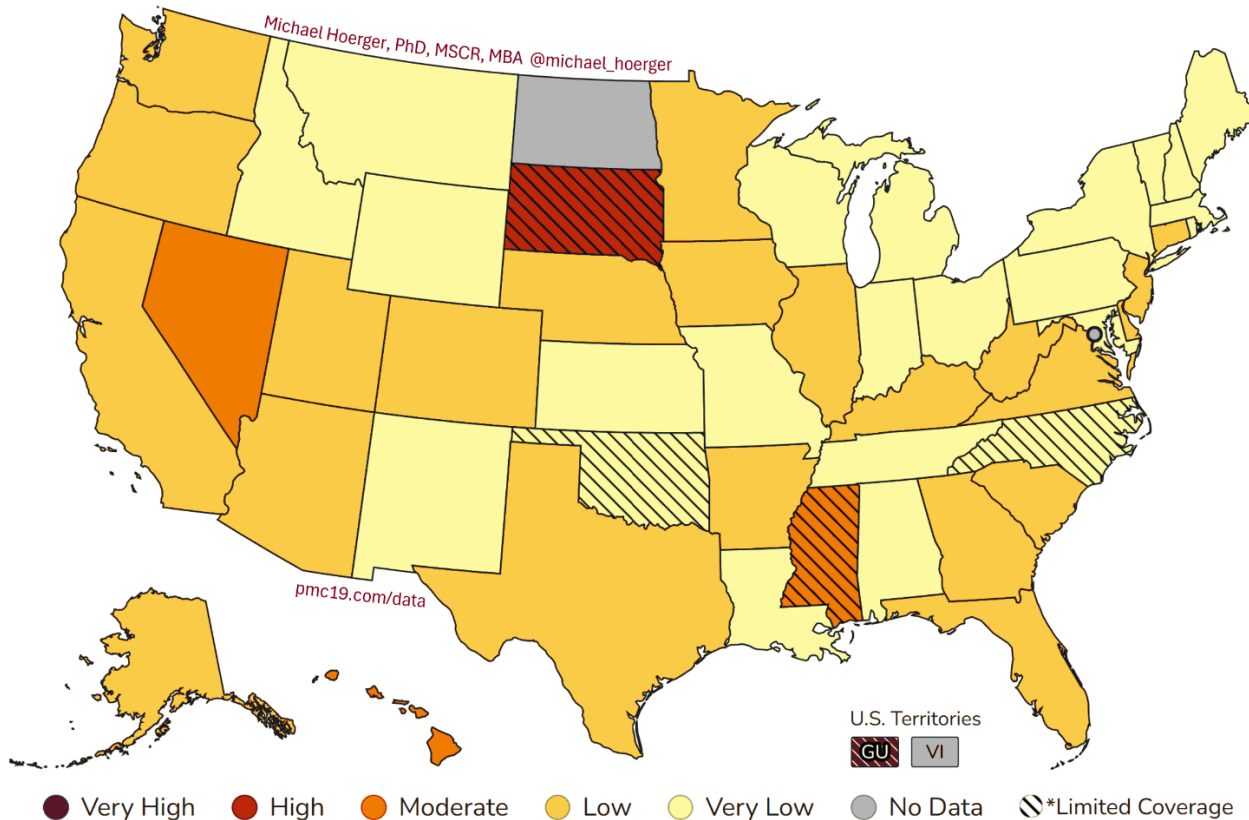
CDC COVID-19 Heat Map

This map uses the CDC state-by-state data to show areas with higher transmission in deeper red. The CDC version of the map, colored in cool blue is available online. Blue tends to confuse people to thinking transmission is “cool” or low, so we and various popular media outlets (e.g., Newsweek) tend to recolor.

<https://www.cdc.gov/nwss/rv/COVID19-currentlevels.html>

Louisiana, South Dakota, Nebraska, and Guam are seeing ‘high’ transmission per the CDC’s most recent data, a reminder that during a national “lull,” transmission can still be high in several places.

COVID-19 Heat Map, CDC Data & Risk Levels, Higher Transmission in Deeper Red



Regional Case Estimation

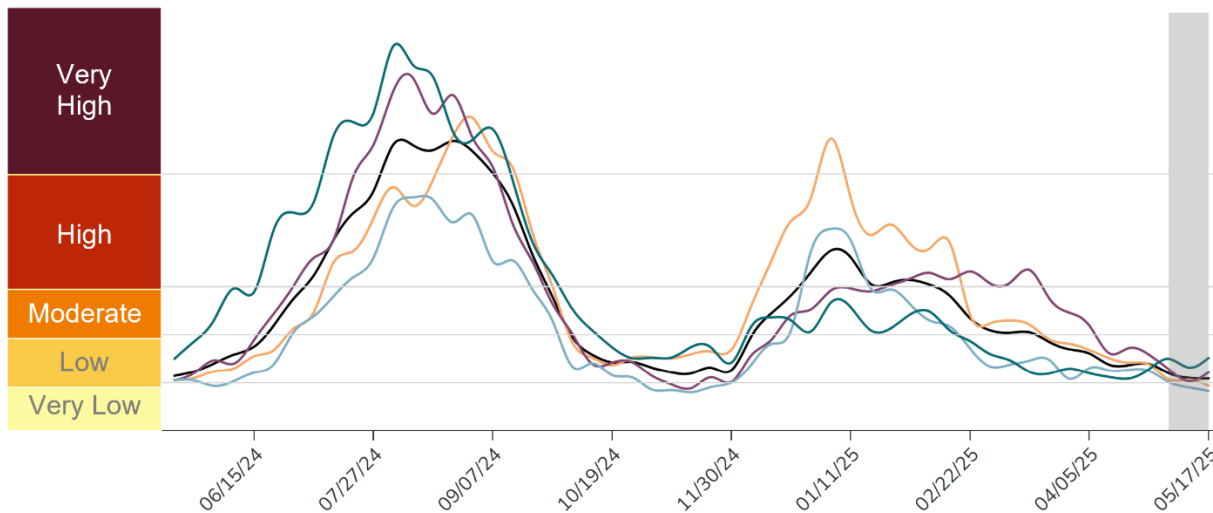
This graph from the CDC shows regional variation in transmission. You can use the “PMC Regional Multiplier” to get a ballpark estimate the proportion of a given region actively infectious with COVID-19 (see Technical Appendix document on the dashboard page).

The CDC regional data are available online:

<https://www.cdc.gov/nwss/rv/COVID19-nationaltrend.html>

State-level data are also available: <https://www.cdc.gov/nwss/rv/COVID19-statetrend.html>

CDC Regional Levels with PMC Estimates of the Percentage Actively Infectious



Estimated Percentage Actively Infectious*		
	PMC Model	Raw CDC Data
 National	0.6% (1 in 180)	0.5% (1 in 196)
 Northeast	0.4% (1 in 236)	0.4% (1 in 257)
 Midwest	0.5% (1 in 209)	0.4% (1 in 227)
 South	0.6% (1 in 160)	0.6% (1 in 175)
 West	0.8% (1 in 129)	0.7% (1 in 140)

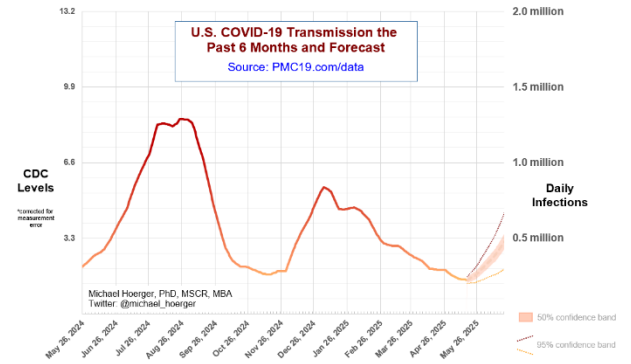
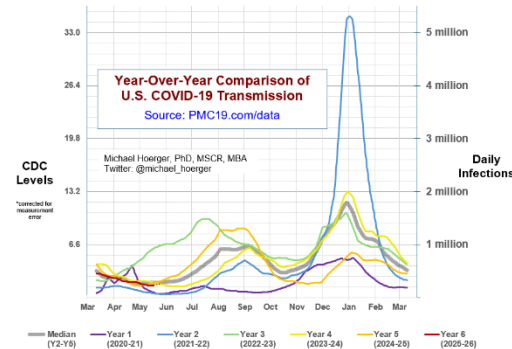
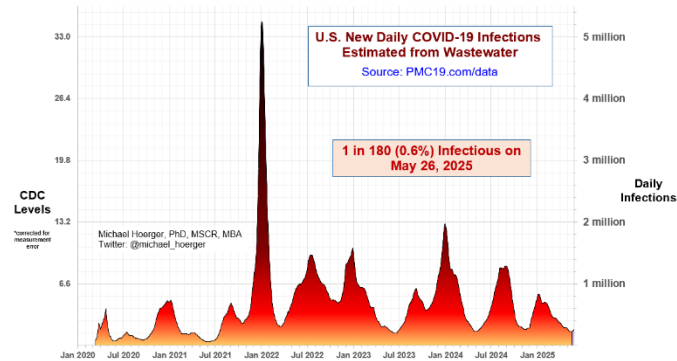
PMC Regional Multiplier*
0.313

* CDC level multiplied by the PMC Regional Multiplier provides an approximate estimate of the percentage actively infectious.

* The "Raw CDC" values are simply the value in the CDC chart multiplied by the PMC Regional Multiplier. The "PMC Model" estimates adjust those data by accounting for reporting time lag.

PMC COVID-19 Dashboard

Here is the complete PMC COVID-19 Dashboard. Please share the images across social media and other websites.
Michael Hoerger, PhD, MSCR, MBA | Pandemic Mitigation Collaborative | pmc19.com/data



Current Levels for May 26, 2025

% of the Population Infectious	0.8% (1 in 180)
New Daily Infections	286,000
New Weekly Infections	1,892,000
Resulting Weekly Long COVID Cases	93,000 to 372,000
Resulting Weekly Excess Deaths	700 to 1,100

Monthly Forecast

Average % of the Population Infectious	0.8% (1 in 126)
Average New Daily Infections	380,467
New Infections During the Next Month	11,414,000
Resulting Monthly Long COVID Cases	571,000 to 2,283,000
Resulting Monthly Excess Deaths	4,100 to 6,800

Running Totals

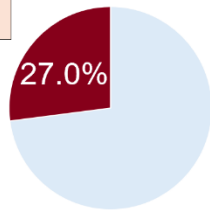
Infections Nationwide in 2025	68,828,000
Average Number of Infections Per Person All-Time, U.S.	3.76

How Does Risk Increase with More Social Contacts?

Number of People	Chances Anyone Is Infectious	Number of People	Chances Anyone Is Infectious
1	0.6%	15	8.0%
2	1.1%	20	10.6%
3	1.7%	25	13.0%
4	2.2%	30	15.4%
5	2.8%	35	17.7%
6	3.3%	40	20.0%
7	3.8%	50	24.3%
8	4.4%	75	34.2%
9	4.9%	100	42.8%
10	5.4%	300	81.3%

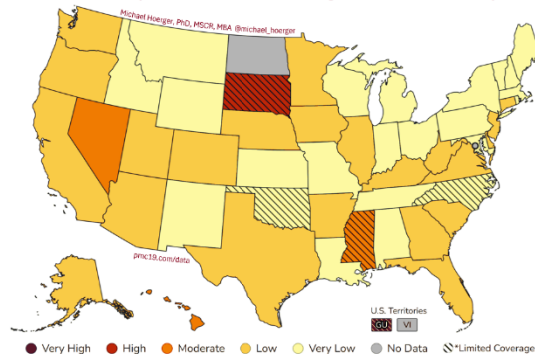
Assumes no testing/isolation protocols (U.S. only)
pmc19.com/data

Michael Hoerger, PhD, MSCR, MBA
Twitter: @michael_hoerger

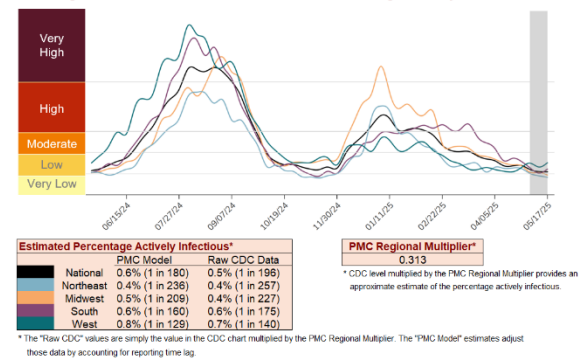


There is more COVID-19 transmission today than during 27% of the pandemic.

COVID-19 Heat Map, CDC Data & Risk Levels, Higher Transmission in Deeper Red



CDC Regional Levels with PMC Estimates of the Percentage Actively Infectious



A separate document called a Technical Appendix appears on the dashboard page and has more methodologic info.